

NOTES:

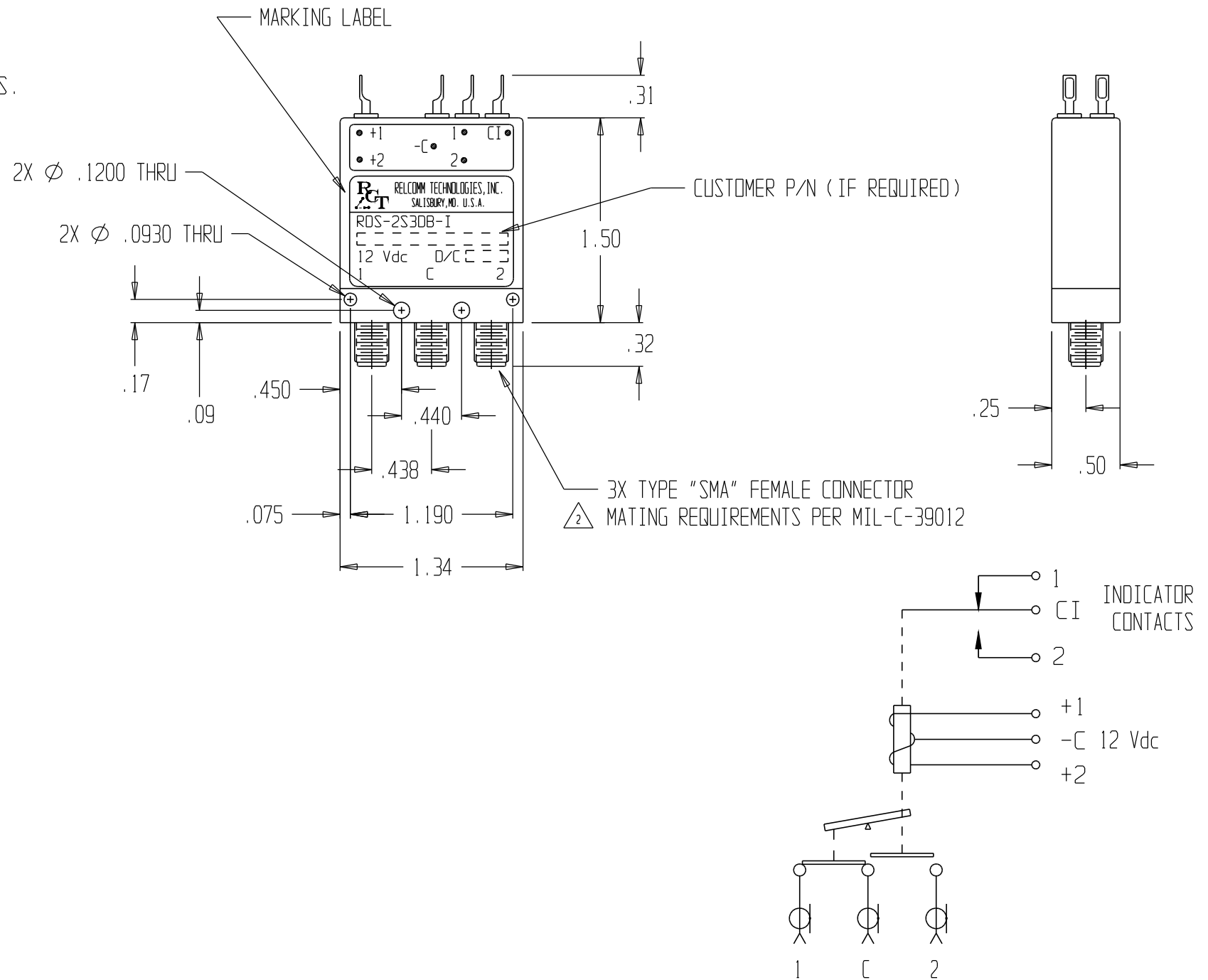
1. INTERPRET CALLOUTS/SYMBOLS PER ASME Y14.5M-1994
2. RECOMMENDED MATING CONNECTOR TORQUE IS 8 lb-in (90 N-cm)
DO NOT EXCEED 12 lb-in (136 N-cm) AS DAMAGE TO CONNECTOR MAY RESULT.
3. VERIFICATION OF CHARACTERISTICS ARE IN REFERENCE WITH MIL-DTL-3928.
4. RECOMMENDED PULSE WIDTH DURATION FOR SWITCHING RELAY, 50-500 MILLISECONDS.

CHARACTERISTICS:

NOMINAL IMPEDANCE (OHM) -----	50			
FREQUENCY RANGE (GHz) -----	DC-4	4-8	8-12.4	12.4-18
V.S.W.R. (MAX) -----	1.2:1	1.3:1	1.4:1	1.5:1
INSERTION LOSS (dB MAX) -----	0.2	0.3	0.4	0.5
ISOLATION (dB MIN) -----	80	70	60	60
AVERAGE POWER (WATTS TYP) -----	85	55	45	35
TEMPERATURE RANGE (OPERATING) --	-40°C - +85°C			
TEMPERATURE RANGE (STORAGE) ----	-55°C - +100°C			
SWITCHING ACTION -----	BREAK BEFORE MAKE			
OPERATING VOLTAGE (OVER TEMP) --	10 - 14 Vdc			
SWITCHING VOLTAGE (MAX @ 25°C) -	8.5 Vdc			
ACTUATING CURRENT (mA MAX) ----	215 @ 12 Vdc & 25°C			
SWITCHING TIME (MAX) -----	15 mSEC			
LIFE (MIN PER POSITION)-----	1 * 10 ^ 6 CYCLES			
INDICATOR CONTACT RATING:-----	5 WATTS TYP., 175V MAX., .25 A MAX			
WEIGHT (OZ) -----	1.4 NOM			

MATERIALS/FINISH:

HOUSING -----	ALUMINUM/NICKEL
COVER -----	ALUMINUM/BLACK ANODIZED
CONNECTORS ---	STAINLESS STEEL/PASSIVATE
INSULATION ---	TEFLON
CONTACTS -----	BERYLLIUM COPPER/GOLD
TERMINALS -----	Ni-Fe/Sn-70 SOLDER



(SCHEMATIC SHOWN IN POSITION 1) (+1 LAST ENERGIZED)

6	1515	6/10/08	A. MAGDA
5	1190	12/01/04	B. JONES
4	1083	7/30/03	M. MAGDA
3	987	10/14/02	C. LEWANDOWSKI
2	137	9/30/96	M. MAGDA MM
1	101	4/15/96	M. MAGDA MM
REV	ECN NO.	DATE	APPROVAL

UNLESS OTHERWISE SPECIFIED:
DIMENSIONS ARE IN INCHES
AND INCLUDE PLATING.
TOLERANCES
.XX ± .02 FRACTIONS ±
.XXX ± .010 SURFACE QUALITY
.XXXX ± .0050 63/ MAX
THIRD ANGLE PROJECTION

DR M. MAGDA 4/13/95
CK J. LAPKE MM 10/16/96
ENG M. MAGDA 10/16/96
MFG
QA
THIS DRAWING AND SPECIFICATIONS ARE THE PROPERTY
OF RELCOMM TECHNOLOGIES AND SHALL NOT BE
REPRODUCED OR COPIED OR USED IN WHOLE OR IN PART
AS THE BASIS FOR THE MANUFACTURE OR SALE
OF ITEM(S) WITHOUT WRITTEN PERMISSION.

		RELCOMM TECHNOLOGIES, INC. 610 BEAM STREET SALISBURY, MARYLAND 21801	
		COAXIAL 1P2T RELAY TITLE "PULSE LATCHING" W/INDICATORS	
SIZE B	DWG NO. RDS-2S3DB-I	REV 6	
SCALE 1:1	DO NOT SCALE DWG	SHEET 1 OF 1	